

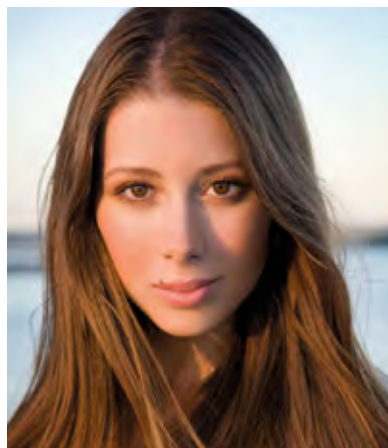


The Friends of Eastwoodhill newsletter



Picnic in the Park with Elizabeth Marvelly

Kiwi singing sensation Elizabeth Marvelly will light up our national arboretum when she performs at next year's Picnic in the Park.



Elizabeth Marvelly

She will be supported by the wonderful Sharon Cotter who sang at the Centennial dinner at Easter.

Twenty-one-year-old Elizabeth is excited about the prospect of travelling to Gisborne for just the second time and putting on a stunning concert at Eastwoodhill on March 18. She will showcase a mix of new songs and old favourites to suit the tranquil surroundings.

"I'm really looking forward to soaking up the summer sun and putting on a great show in a relaxed atmosphere. I can't go anywhere without performing 'Tarakihi', so I'm pretty sure that'll be part of the show."

Tickets to see Elizabeth Marvelly and Sharon Cotter at Eastwoodhill's Picnic in the Park will go on sale in the New Year. To hear samples of their music visit:

www.elizabethmarvelly.com
www.sharoncotter.com



Sharon Cotter

Launch into autumn



Elizabeth Marvelly

March 18, 2011



Tickets \$65

Special members discount
\$55 till January 31, 2011

Bus to and from the
venue available.

Prebook your fantastic picnic
box by Tasty Leaf Catering.
Wine and beer available on
site only.

Download a booking form from
www.eastwoodhill.org.nz
Ph 06 867 7444

Wild weather

Another record year but it's not a lack of rain or high temperatures, but the amount of rain, we've had just over 1400mm so far this year, our highest total since 1573mm in 1960. The 263mm of rain over show weekend in October caused considerable damage with a number of slips throughout the arboretum taking out tracks and trees as they came down. It was a strange week with temperatures in the mid-twenties on the weekend, snow in the ranges on Monday and Tuesday, torrential rain Wednesday and Thursday and fine and high temperatures again by the weekend.

Considerable time has been spent over the past few weeks getting the walking and vehicle tracks back in operation and rescuing trees that have silt backed up against their trunks. The extended brown walk in the Pinetum and extended yellow and purple walks up in Mexico Way are completely impassable now and will need to be rerouted.

Brown Oak Walk

Glen Douglas



The Master Plan

After 18 months of hard work, discussions and drawings flying through cyberspace between here and Charlottesville, Virginia, the Master Plan is finally complete. It has been an amazing and exciting development to have worked on with Thomas Woltz and Breck Gastinger and I have certainly learnt an incredible amount from them both on the need and importance of future planning, especially with an operation as complex and diverse as Eastwoodhill.

Curator's report

Achievements

My family and I are in the last few weeks of our time here at Eastwoodhill, as we are off to Nelson to live in mid-December. Now is the time to reflect on what has been accomplished over the past nine years. The building of the new Visitor Centre, the moving of the chalet out to the Millennial Wood, the extension of the car park, the upgrade of the pavilion, achieving recognition as a "Garden of National Significance" from the New Zealand Gardens Trust, the kitchen refit, rewiring of the Douglas Cook and Visitor Centres, the building of the H.B. and Elizabeth Williams memorial, the mapping of the tree collection and the constant development of the database are just a few of the things we have ticked off, as well as the ongoing maintenance of the collection and property itself.



Acknowledgements

Of course, I haven't done this all by myself! None of it would have been at all possible without the help and support of the staff here at Eastwoodhill – Sandra, Penny, Sally, Madeleine, Brett and especially Maurice. It has been a wonderful experience working with you all.

In addition, the Eastwoodhill Trust Board, ExpressPR, garden ladies and catering team (who are often one and the same), Friends of Eastwoodhill, jeep drivers, neighbours of the arboretum and the wider communities of Ngatapa, Rere and Gisborne have all made invaluable contributions. Eastwoodhill could not possibly exist without the ongoing collaboration and assistance of all these people and supporting organisations. I know the support Eastwoodhill gets from its volunteers is the envy of many other botanic gardens and arboretums around the world.

A fond farewell

Finally, I would like to thank everyone who has made our time here such a wonderful experience. It has truly been an amazing time for us and such an incredible environment for us to raise our two girls and we will certainly never forget it.

I know Eastwoodhill will continue to go from strength to strength as the National Arboretum of New Zealand.

Paul Wynen
Curator

Maurice Hall

Maurice Hall has been the Arboretum Grounds Manager for the past 13 years and describes his job as having "everything to do with maintaining the arboretum and nothing to do with trees".

It's Maurice's responsibility to look after the grounds so the curator can concentrate on the arboretum's valuable tree collection – and he enjoys every minute of it.

"I just love the place so I'm constantly looking for things to do. There's never a dull moment."

Born in Gisborne, Maurice's working life has included - apprentice motor mechanic, owning his own painting business and 17 years managing a farm at Parikanapa. He brings a wide range of skills to the arboretum and on wet days you'll find him in the work shed busy with welding jobs or maintaining equipment.

Out in the park, Maurice is most proud of reducing the number of invasive weeds and establishing a free stock grazing system with neighbouring farmers to keep grass growth under control at no cost.

"Most of my work isn't where people can see it. It's a gradual process."

Maurice and Lois live at Eastwoodhill and he enjoys taking his grandchildren and guided tour groups to his favourite area of the arboretum, Cabin Park.

"There are areas of big tall and established trees there and it's always cool and refreshing. To me it's just magic."



Arboretum grounds manager Maurice Hall is happy in his work at Eastwoodhill.

Photo credit: Paul Wynen



One of Eastwoodhill's most highly regarded volunteers, Margaret Savage, was named the Gisborne 2010 Gardener of the Year by the New Zealand Gardener Magazine.

Photo credit: Diana Dobson and the New Zealand Gardener Magazine



Awesome Christmas gift ideas!

Take the work out of Christmas with the "Christmas in a bag" gift pack. You'll receive a pair of gubba gardening gloves, an Eastwoodhill acrylic photo block, some manuka soap, a high quality centennial umbrella and a postcard of our cheeky fantail. All this presented in an Eastwoodhill eco bag for just \$50 including delivery NZ wide.

Photos canvases are also available to order with a choice of 53 wonderful Eastwoodhill photos. A great Christmas present! Some canvases are available in stock.

Phone the friendly visitor centre staff to order and yes, we do take credit cards over the phone!!



Eastwoodhill donates canvases to Arohanui Hospice

The Eastwoodhill Trust Board recently donated three photo canvases to the Arohanui Hospice in Palmerston North, sharing the beauty of Eastwoodhill with patients to enjoy in their 'quiet room'.

The move was inspired by the Trust Board's past Chairman Brian Crawshaw who passed away earlier this year after a battle with cancer.

Hospice staff selected canvases of Pear Park, our fantail and the serpentine steps to hang. "I think the symbolism of the steps and the journey our patients are on, leapt out to us here," says Arohanui Hospice palliative care social worker Kate McKenzie. "Our team is blown away with the Trust Board's amazing offer to donate these canvases."

Chief executive of Arohanui Hospice Clare Randall (left) and Eastwoodhill Office Manager Sandra Matthews (right) with two of the donated canvases.



Tour Packages

The best way to experience Eastwoodhill Arboretum is with a guided tour.

Packages are available for groups of 15 or more. These can include walking or four-wheel drive tours with morning or afternoon teas, a variety of scrumptious lunches or gourmet evening meals in the peaceful courtyard. The choice is yours and we cater to your requirements. Contact the friendly office staff for details.

All funds received from membership, visitor centre sales, catering and tours contribute to the ongoing maintenance and preservation of your arboretum, Eastwoodhill.



Homestead Garden update

After a massive effort to present the garden to the best of our ability for the centennial celebrations last autumn, we have been cruising through the winter and spring.

The plantings around the H.B. and Elizabeth Williams Memorial are now well established, thanks to Maurice and his diligent watering in late summer and autumn and spring maintenance. This feature has added an extra dimension to the garden – a serenity and beauty that elderly walkers can easily enjoy.

Along the Cook Walk wall we have extended the special hellebore plantings and thanks to a generous donation of Sprekelia (Jacobean Lily), we now have large groups planted further along the top of the bank. They are beginning to flower nicely. If visiting the arboretum in early summer, do look over the hedge from the courtyard to view the self-seeded *Cardiocrinum* lilies – they are a real delight.

Marg Savage

Volunteer



Contacts

Phone: 06 863 9003

Email: enquiries@eastwoodhill.org.nz

Website: www.eastwoodhill.org.nz

Friends committee chair: Pru Roberts

Secretary: Alison Ross

Summer opening hours:

Weekdays 9am - 5pm Sat & Sun 9.30am - 4.30pm

Newsletter editing and design by Expresspr and printing by Te Rau Print.